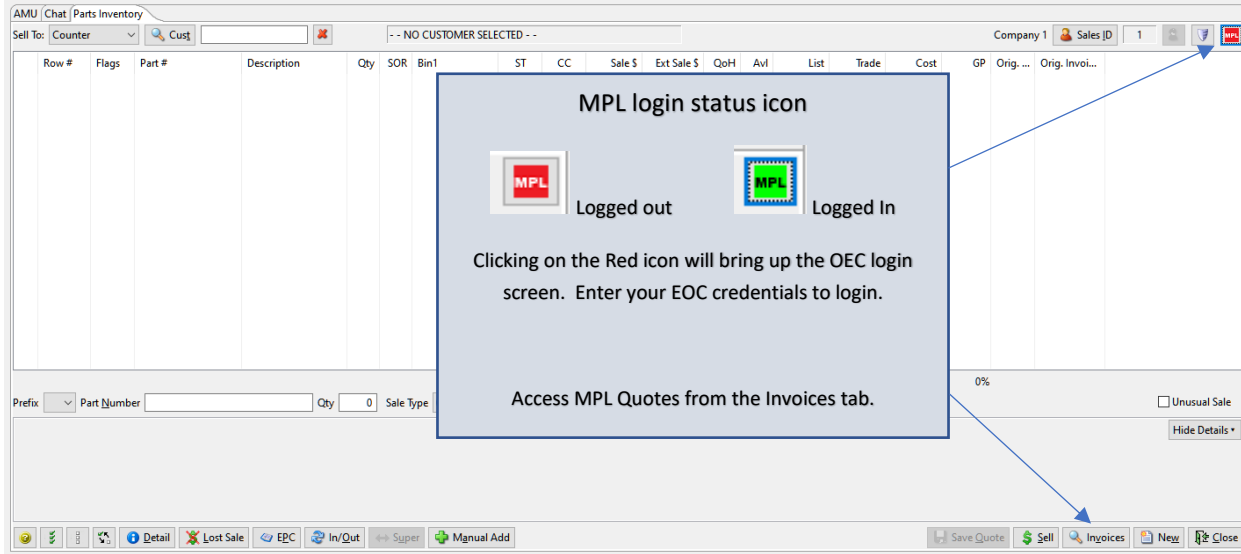


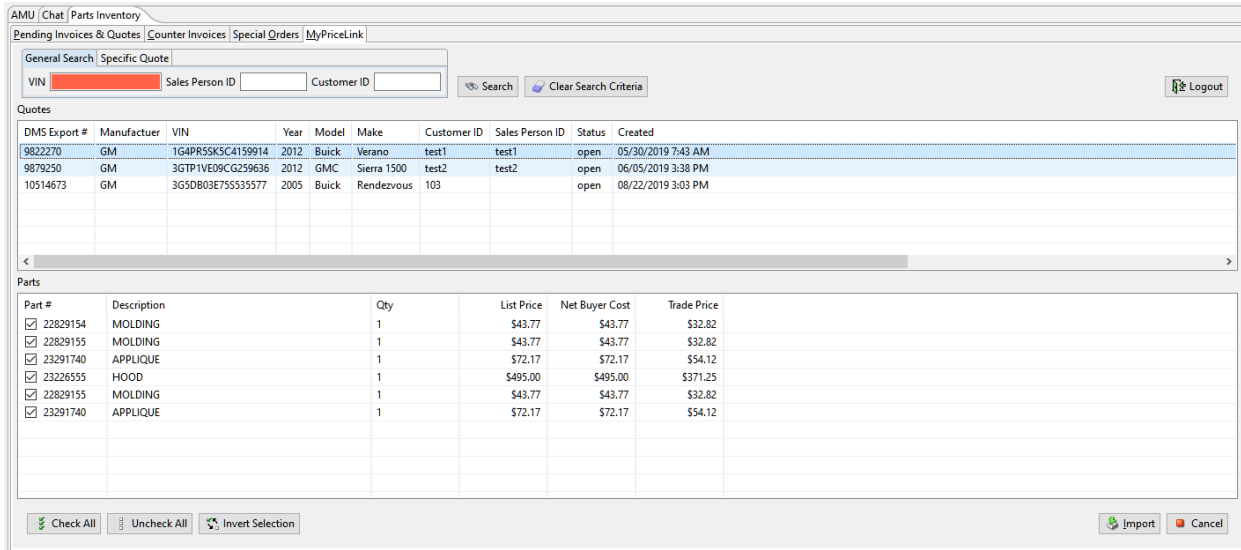
OEC MyPriceLink 1.1 Enhancement



Once logged in to OEC:

Search for a Quote by VIN, Sales ID, Customer ID or Export ID in the MyPriceLink tab.

Edit if needed, import the Quote.



Parts are imported w. MPL icons. User is able to add parts, save updates or sell.

AMU | Chat | Parts Inventory | Parts Inventory

Sell To: Counter | Cust: TEST1 | CATHY'S CRASH PARTS | Edit Customer | Cust Grp Code 1- | COMPANY HERE | Sales ID

Row #	Flags	Part #	Description	Qty	SOR	Bin1	ST	CC	Sale \$	Ext Sale \$	QoH	Avl	List	Trade	Cost	GP	Orig. Invoi...
1		22829154	MOLDING	1	0	SOP	1	--	\$43.77	\$43.77	0	0	\$43.77	\$32.82	\$26.26	0%	
2		22829155	MOLDING	1	0	SOP	1	--	\$43.77	\$43.77	0	0	\$43.77	\$32.82	\$26.26	0%	
3		23291740	APPLIQUE	1	0	SOP	1	--	\$72.17	\$72.17	0	0	\$72.17	\$54.12	\$43.30	0%	
4		23226555	HOOD	1	0	SOP	1	--	\$495.00	\$495.00	0	0	\$495.00	\$371.25	\$297.00	0%	
5		22829155	MOLDING	1	0	SOP	1	--	\$43.77	\$43.77	0	0	\$43.77	\$32.82	\$26.26	0%	
6		23291740	APPLIQUE	1	0	SOP	1	--	\$72.17	\$72.17	0	0	\$72.17	\$54.12	\$43.30	0%	

Prefix: Part Number Qty 0 Sale Type 01: RETAIL (001) Calc Code 001: Calc Code 1

Part Master Info: Bin 1 14 Bin 2 Bin 3 Source 121 On Order 0 B/O Qty 0 Pack Qty 1 Cost \$17.16 Trade \$22.59 List \$30.10 Core \$0.00

Buttons: Detail, Lost Sale, EPC, In/Out, Super, Manual Add, Save Quote, Sell, Invoices, New, Close

Supersession chain is displayed, allowing the user to select a different PN (if applicable).

AMU | Chat | Parts Inventory | Parts Inventory

Sell To: Counter | Cust: TEST1 | CATHY'S CRASH PARTS | Edit Customer | Cust Grp Code 1- | COMPANY HERE | Sales ID

Row #	Flags	Part #	Description	Qty	SOR	Bin1	ST	CC	Sale \$	Ext Sale \$	QoH	Avl	List	Trade	Cost	GP	Orig. Invoi...
1		22829154	MOLDING	1	0	SOP	1	--	\$43.77	\$43.77	0	0	\$43.77	\$32.82	\$26.26	0%	
2		22829155	MOLDING	1	0	SOP	1	--	\$43.77	\$43.77	0	0	\$43.77	\$32.82	\$26.26	0%	
3		23291740	APPLIQUE	1	0	SOP	1	--	\$72.17	\$72.17	0	0	\$72.17	\$54.12	\$43.30	0%	
4		23226555	HOOD	1	0	SOP	1	--	\$495.00	\$495.00	0	0	\$495.00	\$371.25	\$297.00	0%	
5		22829155	MOLDING	1	0	SOP	1	--	\$43.77	\$43.77	0	0	\$43.77	\$32.82	\$26.26	0%	
6		23291740	APPLIQUE	1	0	SOP	1	--	\$72.17	\$72.17	0	0	\$72.17	\$54.12	\$43.30	0%	

Supersession Chain

Part Information: Part 12590958 Desc: (S)GASKET Qty Req: 1 QoH 0 Avail: 0

Part #	Created Date	Description	Bin	QoH	Qty	Avl	Sale \$
12590958	2009-11-01	(S)GASKET	14	0	0	0	\$30.10
12673300	2019-08-22	GASKET	SOP	0	1	0	\$30.40

Buttons: Accept, Cancel

Prefix: Part Number 12590958 Qty 0 Sale Type 01: RETAIL (001) Calc Code 001: Calc Code 1

Part Master Info: Bin 1 SOP Bin 2 Bin 3 Source 1 On Order 0 B/O Qty 0 Pack Qty 1 Cost \$30.15 Trade \$0.00 List \$0.00 Core \$0.00

Buttons: Detail, Lost Sale, EPC, In/Out, Super, Manual Add, Save Quote, Sell, Invoices, New, Close

Added parts are displayed w/out the MPL icon.

AMU | Chat | Parts Inventory | Parts Inventory

Sell To: Counter | Cust: TEST1 | CATHY'S CRASH PARTS | Edit Customer | Cust Grp Code: 1 | COMPANY HERE | Sales ID

Row #	Flags	Part #	Description	Qty	SOR	Bin1	ST	CC	Sale \$	Ext Sale \$	QoH	Avl	List	Trade	Cost	GP	Orig. ...	Orig. Invoi...
1		22829154	MOLDING	1	0	SOP	1	--	\$43.77	\$43.77	0	0	\$43.77	\$32.82	\$26.26	0%		
2		22829155	MOLDING	1	0	SOP	1	--	\$43.77	\$43.77	0	0	\$43.77	\$32.82	\$26.26	0%		
3		23291740	APPLIQUE	1	0	SOP	1	--	\$72.17	\$72.17	0	0	\$72.17	\$54.12	\$43.30	0%		
4		23226555	HOOD	1	0	SOP	1	--	\$495.00	\$495.00	0	0	\$495.00	\$371.25	\$297.00	0%		
5		22829155	MOLDING	1	0	SOP	1	--	\$43.77	\$43.77	0	0	\$43.77	\$32.82	\$26.26	0%		
6		23291740	APPLIQUE	1	0	SOP	1	--	\$72.17	\$72.17	0	0	\$72.17	\$54.12	\$43.30	0%		
7		12673300	GASKET	1	0	SOP	1	1	\$30.40	\$30.40	0	0	\$30.40	\$22.82	\$17.33	43%		

Prefix: Part Number: Qty: 0 Sale Type: 01: RETAIL (001) Calc Code: 001: Calc Code 1 Unusual Sale

Part Master Info: Bin 1: 14 Bin 2: Bin 3: Source: 121 On Order: 0 B/O Qty: 0 Pack Qty: 1 Cost: \$17.16 Trade: \$22.59 List: \$30.10 Core: \$0.00

Buttons: Detail, Lost Sale, EPC, In/Out, Super, Manual Add, Save Quote, Sell, Invoices, New, Close

If saved as a Quote, A/M will update the MPL Quote ID.

AMU | Chat | Parts Inventory | Parts Inventory | Save Quote

Sell To: Counter | Cust: TEST1 | Expires after: 09/21/2019

Row #	Flags	Part #	Description	Qty
1		22829154	MOLDING	1
2		22829155	MOLDING	1
3		23291740	APPLIQUE	1
4		23226555	HOOD	1
5		22829155	MOLDING	1
6		23291740	APPLIQUE	1
7		12673300	GASKET	1

Quote Totals: Sub Total: \$801.05, Freight: \$0.00, Handling: \$0.00, Tax 1: \$40.05, Tax 2: \$0.00, Total Tax: \$40.05, Post-Tax Discount: \$0.00, TOTAL: \$841.10

Other Info: PO #1: PO #2: Delivery Date: 08/22/2019 Will Call: MPL Quote ID: 9822270

Comments:

Buttons: Save, Cancel

Part Master Info: Bin 1: 14 Bin 2: Bin 3: On Order: 0 B/O Qty: 0 Pack Qty: Cost: \$17.16 Trade: \$22.59 List: Unusual Sale

Buttons: Detail, Lost Sale, EPC, In/Out, Super, Manual Add, Save Quote, Sell, Invoices, New, Close

Updated Quote is displayed w/ added PNs and a new DMS Export # provided by OEC.

AMU | Chat | Parts Inventory | Parts Inventory

Pending Invoices & Quotes | Counter Invoices | Special Orders | MyPriceLink

General Search | Specific Quote

VIN: [REDACTED] Sales Person ID: [REDACTED] Customer ID: test1

Search | Clear Search Criteria | Logout

Quotes

DMS Export #	Manufacturer	VIN	Year	Model	Make	Customer ID	Sales Person ID	Status	Created
10516482	GM	1G4PR5SKC4159914	2012	Buick	Verano	TEST1		open	08/22/2019 4:30 PM

Parts

Part #	Description	Qty	List Price	Net Buyer Cost	Trade Price
<input checked="" type="checkbox"/> 22829154	MOLDING	1	\$43.77	\$0.00	\$32.82
<input checked="" type="checkbox"/> 22829155	MOLDING	1	\$43.77	\$0.00	\$32.82
<input checked="" type="checkbox"/> 23291740	APPLIQUE	1	\$72.17	\$0.00	\$54.12
<input checked="" type="checkbox"/> 23265555	HOOD	1	\$495.00	\$0.00	\$371.25
<input checked="" type="checkbox"/> 22829155	MOLDING	1	\$43.77	\$0.00	\$32.82
<input checked="" type="checkbox"/> 23291740	APPLIQUE	1	\$72.17	\$0.00	\$54.12
<input checked="" type="checkbox"/> 15791866	BRACKET KIT	1	\$93.80	\$0.00	\$70.35
<input checked="" type="checkbox"/> 15901527	DEFLECTOR	1	\$265.76	\$0.00	\$199.33
<input checked="" type="checkbox"/> 22849840	GRILLE	1	\$595.00	\$0.00	\$446.25
<input checked="" type="checkbox"/> 22767057	BRACKET	1	\$50.25	\$0.00	\$37.69
<input checked="" type="checkbox"/> 15901538	BRACKET	1	\$62.45	\$0.00	\$46.84
<input checked="" type="checkbox"/> 15917769	EXTENSION	1	\$69.48	\$0.00	\$52.11
<input checked="" type="checkbox"/> 22767056	BRACKET	1	\$51.52	\$0.00	\$38.64
<input checked="" type="checkbox"/> 12590958	GASKET-LWR INT MANIF	1	\$30.10	\$0.00	\$22.59
<input checked="" type="checkbox"/> 12590958	GASKET-LWR INT MANIF	1	\$30.10	\$0.00	\$22.59
<input checked="" type="checkbox"/> 12673300	GASKET	1	\$30.95	\$0.00	\$23.24

Check All | Uncheck All | Invert Selection | Import | Cancel

List Price Behavior

Not logged in to OEC: The standard calc code price escalators will apply.

Auto/Mate AMPS (3.05.1182)

File | Edit | Module | Help

AMU | Chat | Parts Inventory

Sell To: Counter | Cust: [REDACTED] | -- NO CUSTOMER SELECTED --

Company 1 | Sales ID | BOB | MPL

Row #	Flags	Part #	Description	Qty	SOR	Bin1	ST	CC	Sale \$	Ext Sale \$	QoH	Avl	List	Trade	Cost	GP	Orig. Invo...	Orig. Invo...
1		23226555	HOOD	1	0	SOP	1	1	\$445.50	\$445.50	0	0	\$445.50	\$594.00	\$297.00	33%		

Prefix: [REDACTED] Part Number: [REDACTED] Qty: 0 Sale Type: 01: RETAIL (001) Calc Code: 001: Calc Code 1

Part Master Info

Bin 1	SOP	Bin 2		Bin 3		Source	1
On Order	0	B/O Qty	0	Pack Qty	1		
Cost	\$26.26	Trade	\$0.00	List	\$0.00	Core	\$0.00

Unusual Sale | Hide Details

Not logged into MPL, calculated list price applied.

Save Quote | Sell | Invoices | New | Close

Logged in to OEC: Live list price applied.

The screenshot shows the AMU Chat Parts Inventory window. The main table displays the following data:

Row #	Flags	Part #	Description	Qty	SOR	Bin1	ST	CC	Sale \$	Ext Sale \$	QoH	Avl	List	Trade	Cost	GP	Orig. ...	Orig. Invoi...
1		23226555	HOOD	1	0	SOP	1	1	\$495.00	\$495.00	0	0	\$495.00	\$371.25	\$297.00	40%		

A callout box with a blue border and white background is centered over the table, containing the text: "Green MPL icon displayed. Live list price applied." A blue arrow points from the top right corner of the window to the callout box.

Below the table, the "Part Master Info" section is visible, showing fields for Bin 1 (SOP), Bin 2, Bin 3, Source (1), On Order (0), B/O Qty (0), Pack Qty (1), Cost (\$297.00), Trade (\$0.00), List (\$0.00), and Core (\$0.00).

The bottom of the window features a toolbar with icons for Detail, Lost Sale, EPC, In/Out, Super, Manual Add, Save Quote, Sell, Invoices, New, and Close.

As with Legacy parts and the MPL 1.0 version, users with valid OEC credentials will remain logged in until they hit the [Logout] button or until OEC expires their current session.